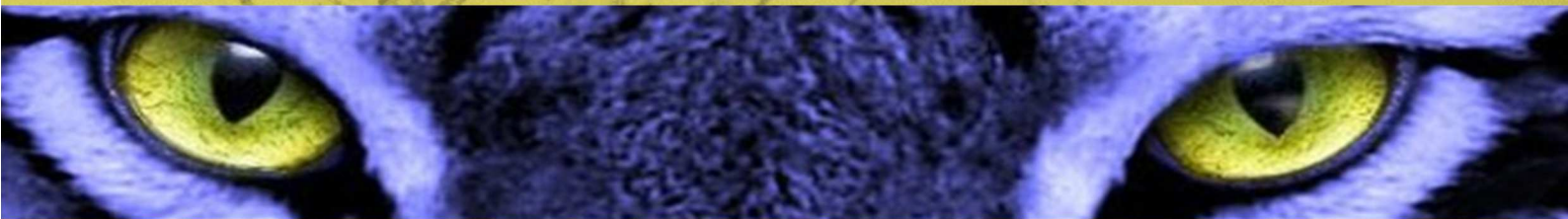




HOT END CONTROL & DRIVE SYSTEM SDT-10



Location:
50°35'4.448"N, 15°7'14.22"E

since 1950



Sklostroj Turnov CZ, s.r.o.
No 210
512 61 Prepere
Czech Republic
www.sklostroj.cz



BENEFITS

- Built from standard industrial components (worldwide availability of spare parts)
- Timer & Drive of the entire hot end equipment is integrated in one unit
- Modern, user friendly, intuitive and safe (meeting fully EU directives)
- Opened interface for communication with the other factory systems

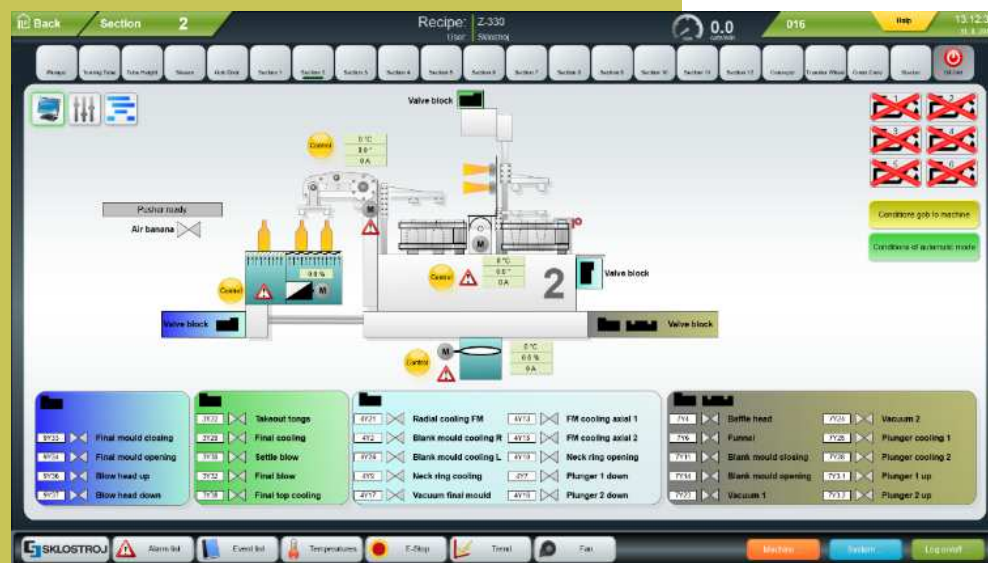
FEATURES

- Control of pneumatic valves, proportional valves, drives with frequency inverters, drives with stepper motors and servo drives.
- Outstanding visualization and diagnostics of all the systems (voltage, temperatures, shaft revolutions, lubrication etc.)
- Control through industrial Wi-Fi tablet "Remote Station" - OPTION
- Remote control & support through the internet connection (VPN) - OPTION



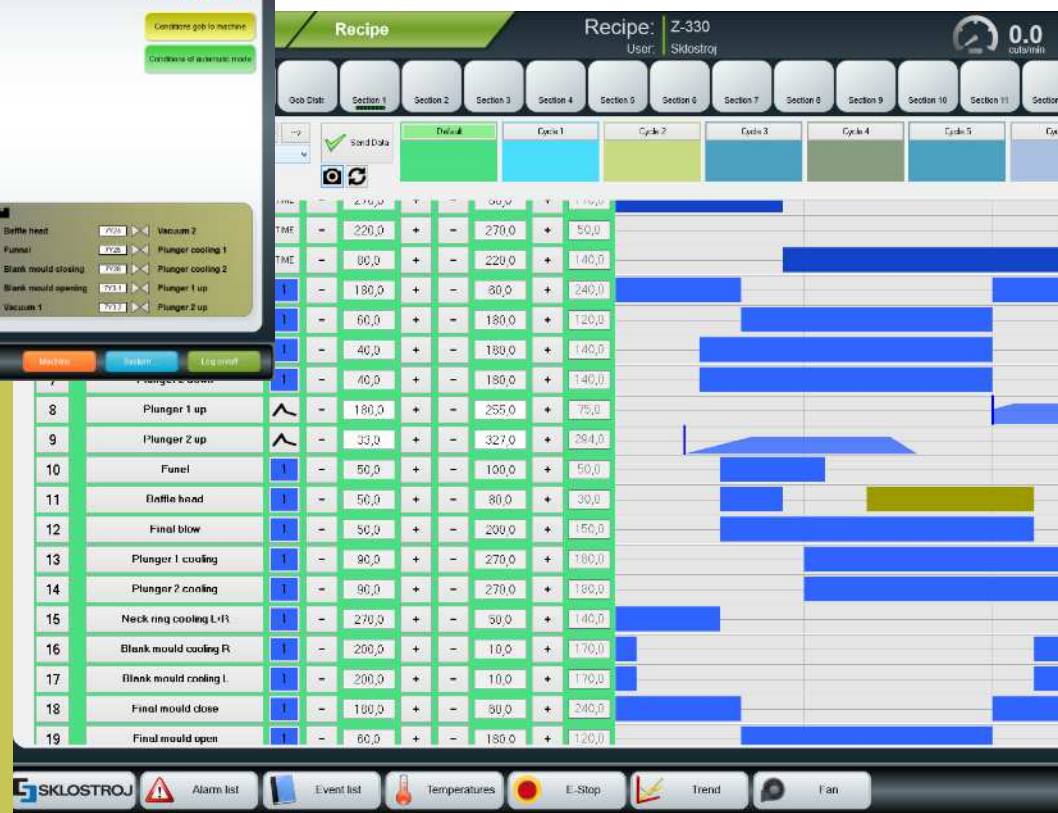
Hot End Control & Drive System

SDT-10



VISUALIZATION:

- Based on Zenon SCADA system
- Intuitive, user friendly interface
- Job recipe system
- Job card - notes for recipe
- Firing Order Generator (FOG) - OPTION
- Pressure curve defined by 16 points - for analog proportional valves
- The identical visualization is used with the Remote Station and similar visualization with the Central Station
- Setting of the different users access rights
- Sophisticated system of user administration - login by RFID card (option)
- Personal action record (all settings are recorded with time and user details)



GENERAL DESCRIPTION

The control system SDT-10 for any IS machine is the sophisticated solution of the machine or entire hot end control. The control system SDT-10 is built from standard industrial components, mainly on Siemens platform. The Control SDT-10 comprises timer and drive system integrated in one unit.

SDT-10 INCLUDES

- Master control cabinet "RM1" – common for timer and drive system of the entire Hot End
- Drive cabinet "RM2" – to control mechanisms in sections
- Set of Local Control Panels "RDx" (for Feeder, Gob Distributor, Conveyors, etc.)
- Power supply cabinet "RM100"
- UPS (batteries)
- Blank Side Control Panel (inclusive steel body)
- Blow Side Control Panel (inclusive steel body)
- Cables between equipment and control cabinets in standard up to 45 m
- HMI (operator terminal)

SERVO AXIS (INCLUSIVE MOTORS)

- Feeder Plunger or Plungers
- Feeder Revolving Tube - revolving
- Feeder Revolving Tube – micro lifting - OPTION
- Shears
- Gob Distributor
- IS Conveyor
- Transfer Unit
- Cross Conveyor - OPTION
- OPTIONS to increase number of servo axis (Invert, Take-out, etc....)

48 **digital events** for Pneumatic Valves per section with OPTION to increase on 72 events

4 **analog events** per section, OPTIONAL possible increase of analog events

REVIEW OF OPTIONS TO SDT-10

- Pushers control system (for SKLOSTROJ E-Pushers, pushers it selves as well optional)
- Servo Take-Out and Servo Invert Control
- Control of Proportional Valves
 - Plunger Pressure Control System
 - Counter Blow Control System (or Plunger Cooling)
 - Final Blow Control System
- RS Remote Station
- CS Central Station
- FOG Firing Order Generator
- RFID Login - Sophisticated system of user administration - login by RFID card
- MWGF Multi Weight Gob Feeding Control
- PLC as the opened interface for communication with the other factory systems
- LED illumination of sections integrated in the rear of the blank side control panel
- Customer wish modifications
- VPN Support 24/7

SUBSTITUTION OF
OBSOLETE SYSTEMS ON
EXISTING MACHINES