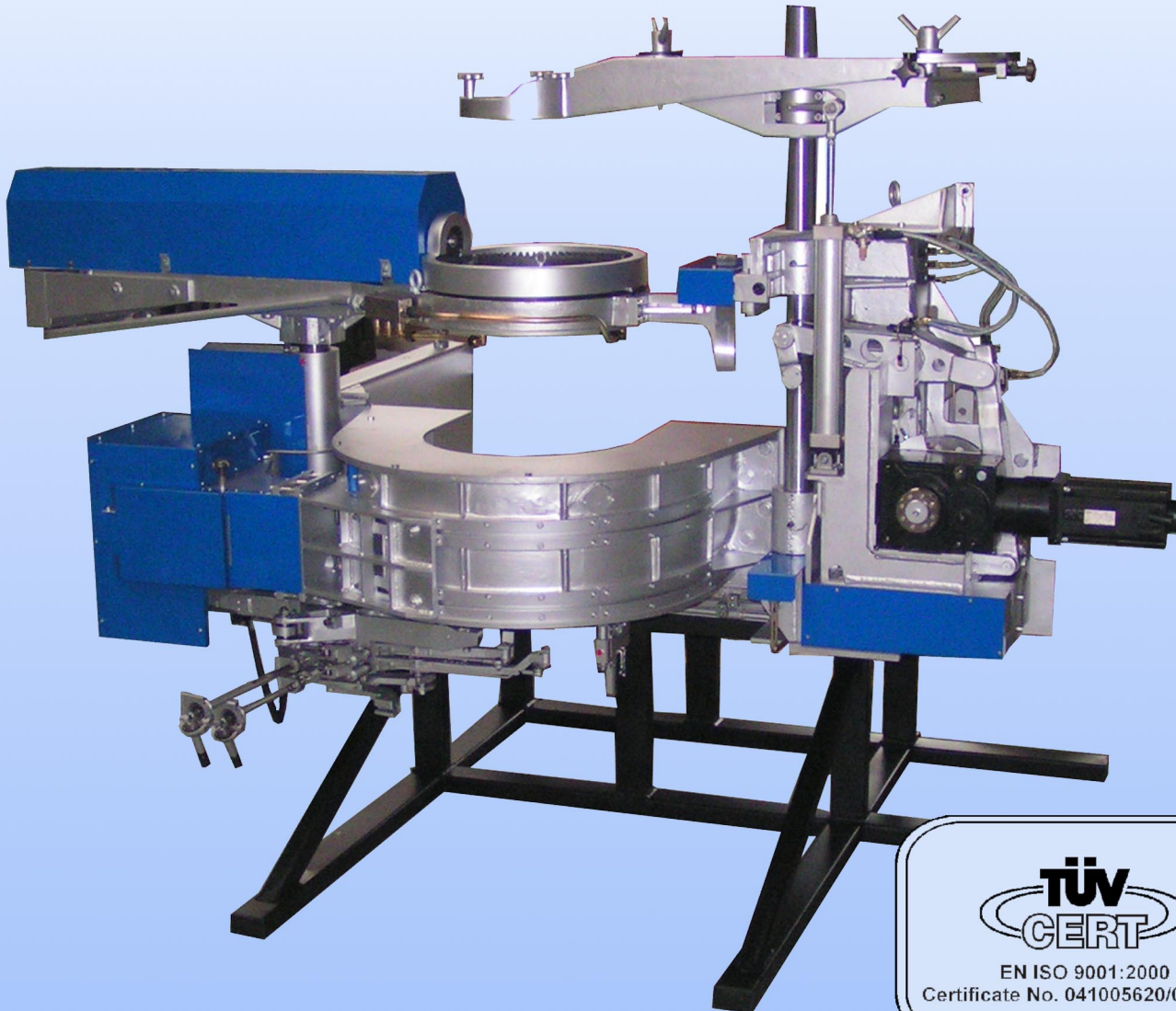




**SKLOSTROJ**  
**Sklostroj Turnov CZ, s.r.o.**  
Plants, lines, machines, equipment and moulds  
for the container glass production



**GOB FEEDER DS-P4-1**

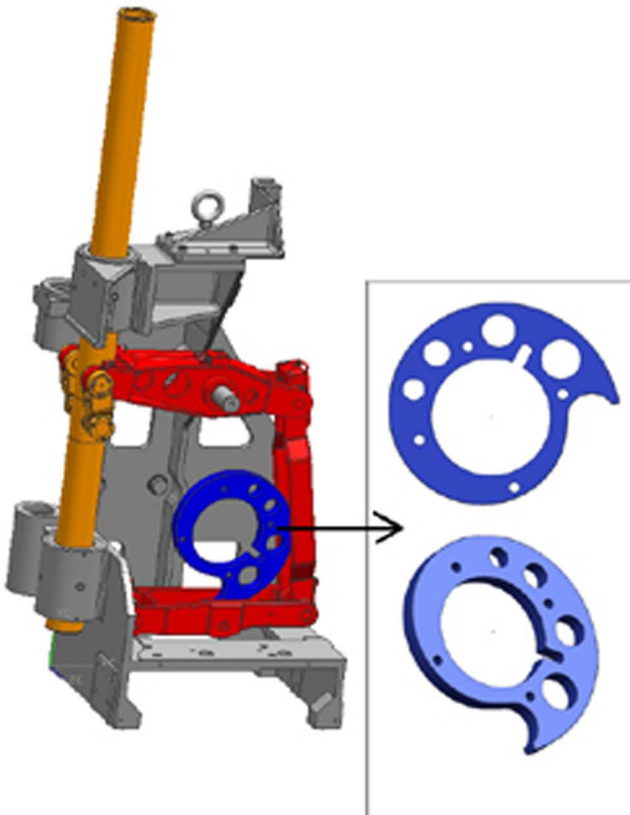
# SKLOSTROJ - Servo Gob Feeders

## Advantages and characteristics

"Quality begins by the exact gob definition"

- simple design of the gob mechanisms proved by longtime use and customers' satisfaction
- high reliability, long service life of the feeding mechanisms - a guarantee of simple operation and minimum maintenance
- userfriendly control through visualisation at the operator's terminal
- feeding mode SG, DG 76 mm and 111 mm
- central lubrication of mechanisms " LINCOLN "

## Plunger servo drive "Spiral Drive"



- genuine servo drive of the plunger - set-up repeatability giving stability of the production process

- all parameters of the plunger drive can be set-up from the operator's terminal reducing start-up time for the repeated production

- simple design minimizes potential break-downs

- easy visual control of the mechanism operation, drive autodiagnosics prevention of idle times

- plunger drive by the synchronous servodrive - giving precise operation, and repeatability of parameters set-up

- the following parameters can be set through the visualisation at the operator's terminal while the mechanisms keeps running:

- speed,
- plunger stroke,
- course of the plunger stroke,
- phase shift

Scope of parameters of the plunger drive:

maximum speed 200 cuts/min

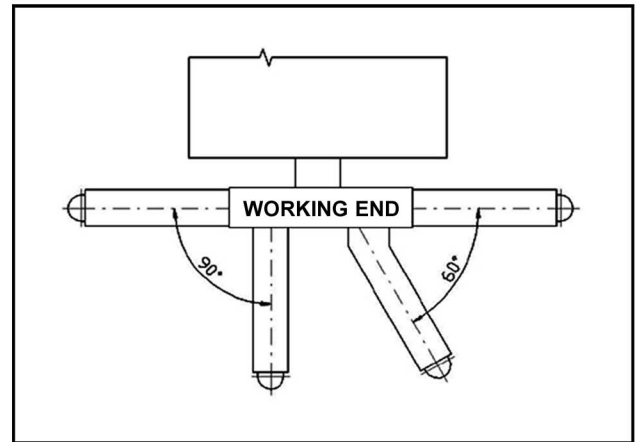
maximum stroke 210 mm (8,3")

## Angular shears servodrives

- electronic set-up of the speed, working angle of the shears arm opening ( $23 \pm 13$ )° - while the constant angle of the shears arm opening for a replacement of the orifice ring remains 26°
- maximum speed 200 cuts/min (for the angle of the shears arm opening 13°)
- range of the shears height from the bottom edge of the orifice ring ( $14 \pm 45$ ) mm



Shears can be turned to  $(0 \pm 90)$ ° to the left and  $(0 \pm 60)$ ° to the right (viewed against the molten glass flow)



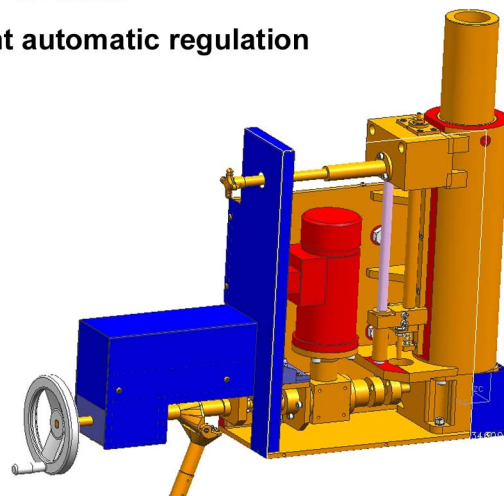
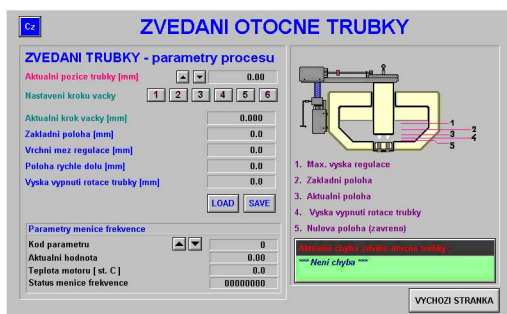
## Revolving tube drive and lifting

### Revolving tube drive

- maximum diameter of the revolving tube 12"
- electromotor of the revolving tube drive - improvement of the operation safety
- higher stiffness of the revolving tube arm - improvement of the gob weight stability
- stepless regulation of the tube revolving ( $1 \pm 15$  tpm), can be adjusted while the tube is in operation

### Servodrives of the revolving tube lifting:

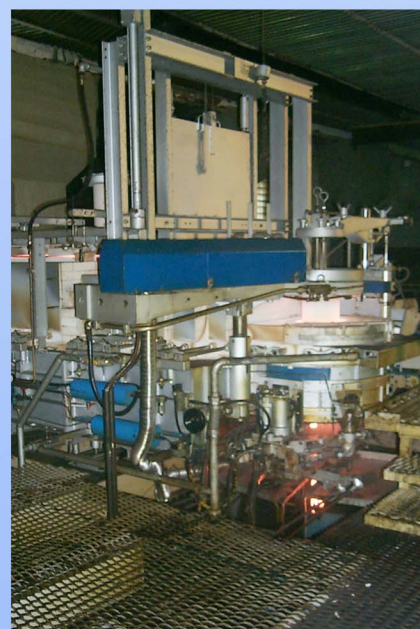
- improves operator's comfort and accuracy of the gob weight control by setting-up the parameters through visualisation at the operator's terminal
- easy connection with the system of the gob weight automatic regulation



## Forehearths and technical parametres

FOREHEARTHES						
Width of the channel - cooling zone (mm)	660 (26")	915 (36")			1067 (42")	
Width of the channel - equalizing zone (mm)	660 (26")	560 (22")	660 (26")	915 (36")	915 (36")	1067 (42")
Width of the input to the spout (mm)	560 (22")					
Depth of the spout (mm)	180 (7") 250 (10")	250 (10") 290 (11 3/8")			290 (11 3/8")	
Standard lenghts of the channel (mm)	5760 (18'10 1/2") 6370 (20'10 1/2") 6980 (22'10 1/2") 7590 (24'10 1/2")	5760 (18'10 1/2") 6370 (20'10 1/2") 6980 (22'10 1/2") 7590 (24'10 1/2") 8200 (26'10 1/2") 8810 (28'10 1/2") 9420 (30'10 1/2")			8200 (26'10 1/2") 8810 (28'10 1/2") 9420 (30'10 1/2") 10030 (32'10 1/2")	

FEEDING MODE			
Number of gobs	SG	DG	
Pitch	0 mm	76 mm (3")	111 mm (4 3/8")
Depth of spout	RECOMMENDED WEIGHT OF GOBS (gr)		
180 mm (7")	100 - 1200	60 - 250	60 - 350
250 mm (10")	180 - 1500	60 - 300	100 - 500
290 mm (11 3/8")	180 - 2000	--	120 - 850



**Address: Sklostroj Turnov CZ, s.r.o.**

**Přepěřska 210 \* 511 01 Turnov \* The Czech Republic**

**Phone: +420 481350111, 481350200, 481350250, 481350100**

**Fax: +420 481350222, 481350221, 481350220**

**Hot line +420 603 444499**

**E-mail: [sklostroj@sklostroj.cz](mailto:sklostroj@sklostroj.cz) \* <http://www.sklostroj.cz>**